

job name:
 type:

) (ula.linear™ spec sheet 90CRI

material

housing
 an hourglass curved profile with a soft bullnose bottom return. precision 6063 prime T5 aluminum extrusion. powder coated finish. standard finishes listed below.

bottom diffuser

.118" thick laser cut optimum light diffusion acrylic. 72% light transmission with matte surface providing light scattering glare reduction. Colorless diffusion significantly reducing color shift of the LED's.

top diffuser

patent-pending Brightwing™ diffuser provides a 94% efficient "batwing" distribution. fixture provides highly-uniform indirect illumination.

LED

LED board in 3000K, 3500K, or 4000K (90+ CRI) employing Cree JK2835 281B LEDs. consult factory for 2700K. LEDs are rated >50,000 hours L70 (10K) at 85°C per LM-80 test data, and 70,000 hours projected life per IES TM-21. slim 5C (3-18/2-22) white power cord is standard with other color options listed below.

driver

constant current, class P class 2 power unit, class A sound rating, universal input (120-277V) programmable driver, 1% minimum dimming level, PF >0.90. protections include short circuit, input/output isolation and surge protection (3KV). wired for 0-10v dimming from factory.

mounting

5"dia. spun steel power feed canopy in satin white. two point vertical suspension of stainless steel cables attaches with field adjustable grippers that allow for exact AFF mounting heights. non-powerfeed leg has 2" satin white canopy at top.

finish

standard powder coat paint finishes listed below.

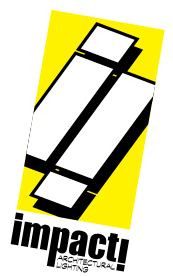
emergency

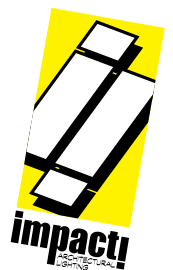
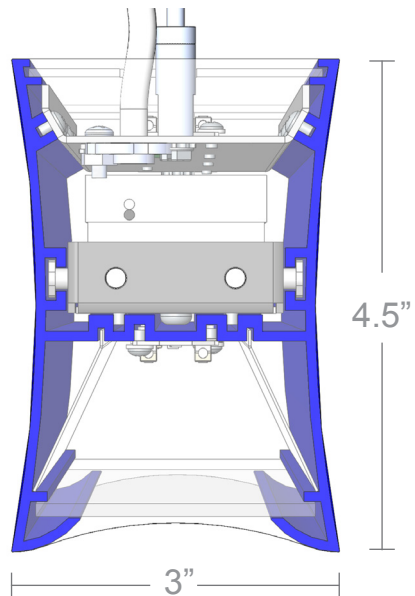
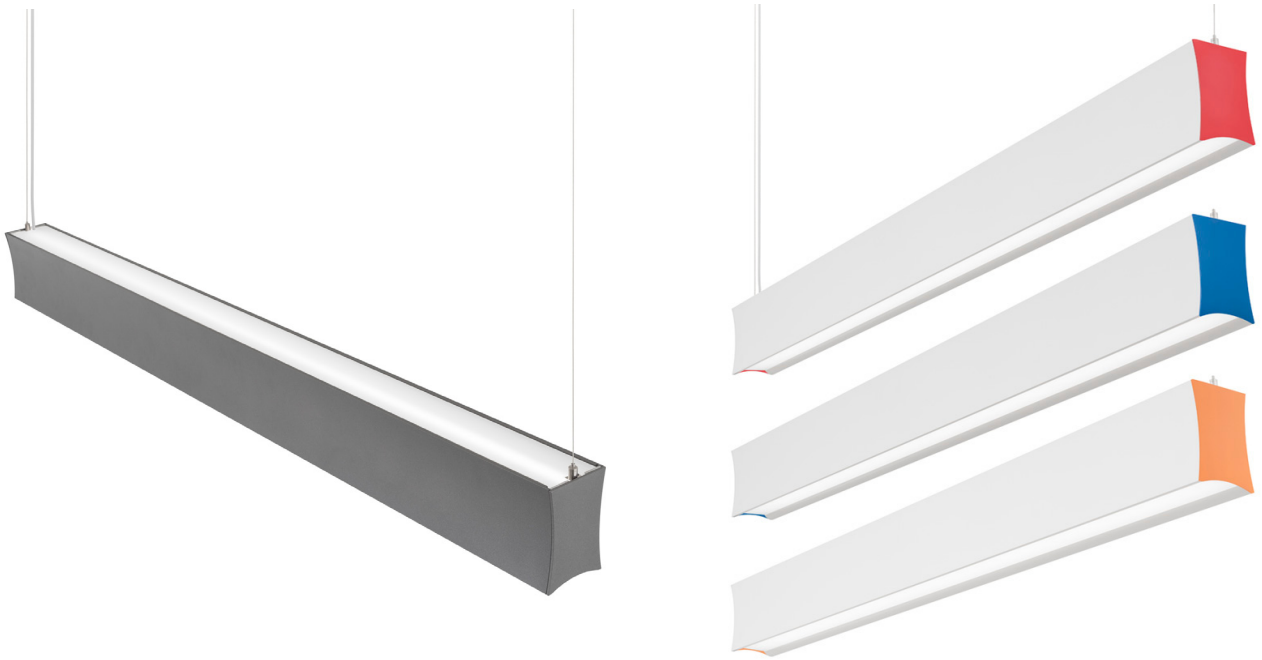
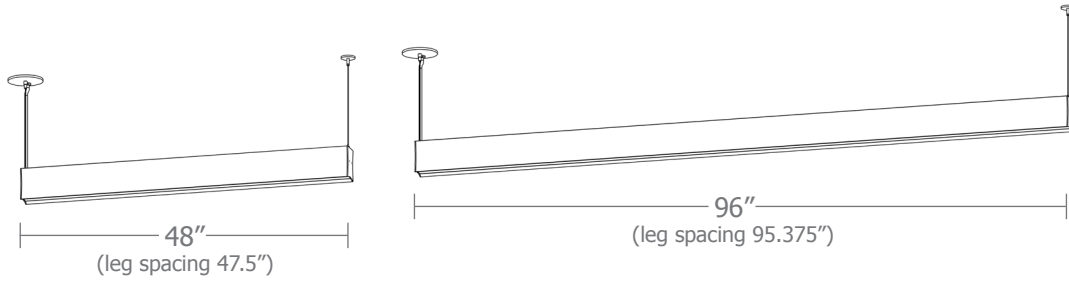
when required, recommend use of inverter (by other).
 optional WREM: wired for remote EM battery, requires 2nd power cord.



catalog number

size	direct LED CCT lumens	indirect LED CCT lumens	finished finish	power cord	options
P7248 (4ft) 48"l X 4.5"ht	30 3000K FX 1600 lm (400 lm/ft ; 5w/ft) 35 3500K LO 2500 lm (625 lm/ft ; 8w/ft) 40 4000K HI 3500 lm (875 lm/ft ; 12w/ft) HX 4000 lm (1000 lm/ft ; 14w/ft) CL xxxx lm custom lumens consult factory (1200-4400 lm)	30 3000K FX 1600 lm (400 lm/ft ; 4w/ft) 35 3500K LO 2500 lm (625 lm/ft ; 7w/ft) 40 4000K HI 3500 lm (875 lm/ft ; 9w/ft) HX 4000 lm (1000 lm/ft ; 11w/ft) NUL no uplight CL xxxx lm custom lumens consult factory (1200-5600 lm)	AP anodized paint BS brass BU blue BZ bronze CP champagne FB flat black GM gun metal MB military blue MW matte white OR orange RD red SB satin black SS satin silver TG textured gray YO yellow	WHPC white power cord and canopy BKPC black power cord and canopy SBPC silver braid power cord and white canopy	3FT 36" cables 6FT 72" cables DCDM Dual circuit dimming (requires second power cord) ECXX color end caps (XX = painted finish) WREM wired for remote EM battery pack (by other) (see note above)
P7296* (8ft) 96"l X 4.5"ht	30 3000K FX 3300 lm (375 lm/ft ; 5W/ft) 35 3500K LO 5000 lm (625 lm/ft ; 8W/ft) 40 4000K HI 7100 lm (875 lm/ft ; 12W/ft) HX 8100 lm (1012 lm/ft ; 14W/ft) CL xxxx lm custom lumens consult factory (3200-8800 lm)	30 3000K FX 3200 lm (375 lm/ft ; 4w/ft) 35 3500K LO 5000 lm (625 lm/ft ; 6w/ft) 40 4000K HI 7000 lm (875 lm/ft ; 9w/ft) HX 8100 lm (1012 lm/ft ; 11w/ft) NUL no uplight CL xxxx lm custom lumens consult factory (3200-11000 lm)	premium finish RAL specify RAL#		





Quick Calc Table

Tests indicated below are a combination of direct and indirect. LLF are as close as possible.

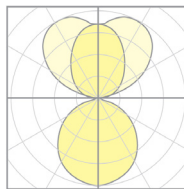
for more detailed calculations see table on next page.

Cat No	Direct Delivered* Lumens	Indirect Delivered* Lumens	Watts 120V / 277V	IES File #	LLF to be applied
P7248 FX FX	1600	1600	38	06212A	.35
P7248 LO LO	2500	2500	58	06212A	.55
P7248 HI HI	3500	3500	81	06212A	.76
P7248 HX HX	4000	4000	93	06212A	.87
P7296 FX FX	3200	3200	75	(2) 06212A	.35
P7296 LO LO	5000	5000	115	(2) 06212A	.55
P7296 HI LO	7100	7000	161	(2) 06212A	.76
P7296 HX HX	8100	8100	185	(2) 06212A	.87

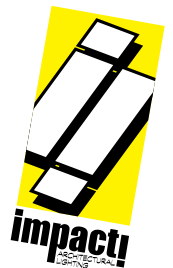
*delivered lumens based on 4000K, 90+ cri (3000K multiplier .95)

The application of a Light Loss Factor is required to:

- match the lumen output for the power module specified
- incorporate the increased lumen output due to LED/Driver upgrades



P7248-HX-HX



Advanced Calculation Table

Tests are for each element separately and must be "stacked" to represent single fixture
 Consult factory for applications assistance

Direct

Cat No	Delivered* Lumens	Watts 120V/277V	IES File #	LLF to be applied
P7248	FX 1600	20	06212C	.38
P7248	LO 2500	31	06212C	.60
P7248	HI 3500	43	06212C	.84
P7248	HX 4000	49	06212C	.96

P7296	FX 3200	40	(2) 06212C	.38
P7296	LO 5000	61	(2) 06212C	.60
P7296	HI 7100	86	(2) 06212C	.84
P7296	HX 8100	98	(2) 06212C	.96

*delivered lumens based on 4000K, 90+ CRI (3000K multiplier .95)

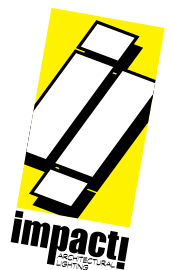
Indirect

Delivered* Lumens	Watts 120V/277V	IES File #	LLF to be applied
FX 1600	18	06212B	.34
LO 2500	27	06212B	.54
HI 3500	38	06212B	.75
HX 4000	44	06212B	.86

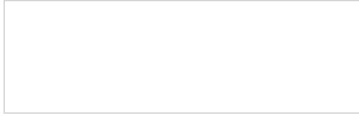
FX 3200	35	(2) 06212B	.34
LO 5000	54	(2) 06212B	.54
HI 7000	75	(2) 06212B	.75
HX 8100	87	(2) 06212B	.86

The application of a Light Loss Factor is required to:

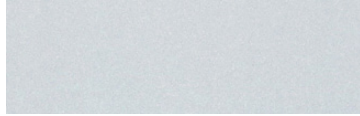
- match the lumen output for the power module specified
- incorporate the increased lumen output due to LED/Driver upgrades



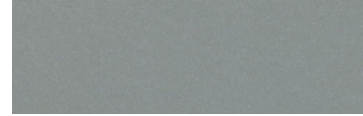
Powder Coat Paint Finishes



MW matte white



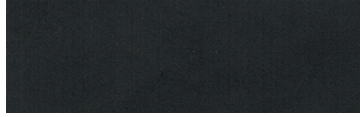
AP anodized paint



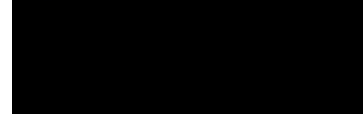
SS satin silver



TG textured gray



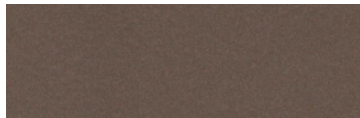
FB flat black



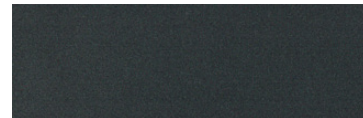
SB satin black



CP champagne



BZ bronze



GM gun metal



OR orange 2011



BU blue 5017



BS brass



RD red 3020



YO yellow 1018



MB military blue

For accurate color verification, actual finish samples are available upon request.

Premium Finishes*



RAL#

*Available on select series. Consult product submittal for availability.

